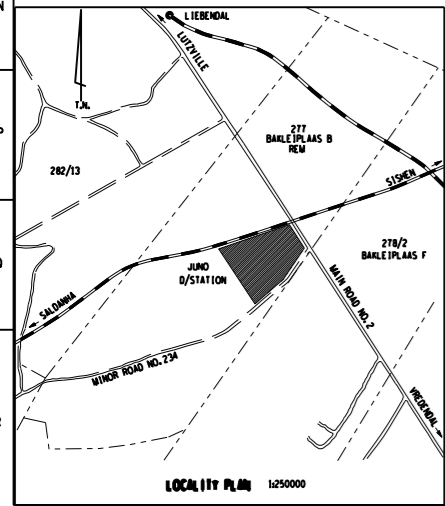


BAY SCHEDULE 0.03/1493		
BAY DESCRIPTION	SHEET No	
FEEDER 1	400 FF 04 (MOD)	
FEEDER 2 - (FUTURE)	+ 132 FF 59	
TRACTION FEEDER (WAS FEEDER 2 - FUTURE)	400 FF 01	
FEEDER 3 (FUTURE)	400 FF 01 + 132 FF 59 (MOD)	
FEEDER 4	400FF 03 (MOD)	
FEEDER 5 (FUTURE)	SCHED. SHT 29	
FEEDER 6 (FUTURE)	SCHED. SHT 30	
CAPACITOR 1	SCHED. SHT 12	
CAPACITOR 2 (FUTURE)	SCHED. SHT16&16A	
CAPACITOR 3 (FUTURE)	SCHED. SHT27&27A	
CAPACITOR 4	SCHED. SHT 13	
FEED TO 400kV TRACTION BUSBAR	400FF 03 (MOD)	
TRANSFORMER 11		
TRANSFORMER 12		
BUSBAR REACTOR 1	SCHED. SHT 10	
BUSBAR REACTOR 2	SCHED. SHT 11	
BUS COUPLER 'A'	400 BC 01	
BUS COUPLER 'B'		
BUS SECTION (FUTURE)	SCHED. SHT 28	
TRFR TRACTION 1	SCHED. SHT 8	
TRFR TRACTION 2	SCHED. SHT 8	
FEEDER 1	SCHED. SHT 8	
FEEDER 2	SCHED. SHT 8	
FEEDER 1	132 FF 00	
BUS COUPLER 'A'	SCHED. SHT18&18A	
BUS COUPLER 'B' (FUTURE)	SCHED. SHT 31	
TRANSFORMER 11	SCHED. SHT19&19A	
TRANSFORMER 12	SCHED. SHT26&26A	
BUSBAR 1&2 VT EAST	132 VT 02	
BUS SECTION (FUTURE)	132 BS 03	
BUSBAR 2 VT WEST (FUTURE)	0.03/11860	
132 VT 02 (MOD)		
400kV FEEDER 3 CROSSOVER BAY	SCHED. SHT 22	
400kV FEEDER 5 CROSSOVER BAY	SCHED. SHT 23	
TRANSFORMER 22	SCHED. SHT 34	
TRANSFORMER 21	0.03/11860	
66/22kV TRFR 31	0.03/11887	
BUS COUPLER 'A'	SCHED. SHT 36	
FEEDER 1	0.03/11879	
FEEDER 2	SCHED. SHT 36	
TRANSFORMER 22	SCHED. SHT 36	

BUSBAR CONDUCTOR SIZE	
400kV BUSBAR	2x800mm ²
132kV BUSBAR	2x800mm ²
66kV BUSBAR	1x400mm ²

TENSION PER CONDUCTOR	
400kV BUSBARS	8kN
400kV STRINGERS	4kN
132kV BUSBARS	6kN
132kV STRINGER 1 CONDUCTOR/φ	4kN
132kV STRINGER 2 CONDUCTOR/φ	2kN
50kV STRINGERS	8kN
50kV NEUTRAL CROSS CONNECTIONS	2kN
EARTHWIRE	2kN
TRACTION UNDERPASS (2 CONDUCTORS/φ)	9kN

- NOTES:**
- CO-ORDINATES AND CONTOURS TAKEN FROM DRG. 0.03/7311 CONTOURS ARE AT 1m INTERVALS.
 - SEE DRG. 0.03/7483 FOR DIRECTION OF ISOLATOR BLADE OPENING AND EARTH SWITCH POSITIONS.
 - K INDICATES TELEPHONE KIOSK. F & I INDICATES FIRE EQUIPMENT KIOSK. T INDICATES FLOODLIGHT TOWER.
 - INDICATES 18m FLOODLIGHT MAST. INDICATES 24m FLOODLIGHT MAST.



REV	REVISION DESCRIPTION	BY	CHKD	AUTH	DATE	0.03/1493
15	APP. ADDED. SEE DRG. 0.03/1493.					
14	OVERHEAD LINES & LOCALITY PLAN RE-INITIATED & BAY SCHEDULE 0.03/1493.					
13	PRELIMINARY STATUS REMOVED. SCHEDULES 0.03/1493 & 0.03/1494.					
12	REWORK ON C&T TITLE BLOCK UPDATED. ALL PREVIOUS REVISIONS INCLUDE 400kV TRACTION FOR & UNDERPASS ADDED. 400kV YARD EXTENDED.					
11	CONTOUR PLAN					
10	STATION ELECTRIC LAYOUT					
9	BAY SCHEDULE					
8	FOUNDATION LAYOUT					
7	STEELWORK LAYOUT					
6	TRUCK & BRIDGE LAYOUT					
5	TRUCK & BRIDGE LAYOUT					
4	TRUCK & BRIDGE LAYOUT					
3	TRUCK & BRIDGE LAYOUT					
2	TRUCK & BRIDGE LAYOUT					
1	TRUCK & BRIDGE LAYOUT					

APPROVED BY: P. PEACE

DATE: 30/03/2016

DESIGNED BY: P.J.C. LEWIS

DRAWN BY: Z. FOUAL

DATE: 22/12/2015

SCALE: 1:1000

ESKOM
Transmission

JUNO
KEY PLAN

0.03/1493

16